

ADVOCATING FOR NATURAL RESOURCES IN THE HEAT OF INCIDENT MANAGEMENT

Karl Brown, PhD, CF

National Park Service - Natural Resource Stewardship and Science

Richard Schwab

National Park Service – National Interagency Fire Center



NPS Photo/ Tom Farrell

CERRO GRANDE



NORTH CASCADES





ZION



THESE ARE THE FIRES OF OUR TIMES

HOWEVER,
SOME FIRES
ARE GOOD



WILDLIFE BENEFITS
SAGUARO NATIONAL PARK
DEER HEAD FIRE



Wildland Fire Management

National Park Service

U.S. Department of the Interior



- **Restore and Maintain Landscapes**: Wildland fire is a desired natural process and provides opportunities for the accomplishment of resource management objectives.
- **Create Fire-Adapted Communities**: Human populations and infrastructure can withstand a wildfire without loss of life and property.
- **Respond to Wildfire**: All jurisdictions participate in making and implementing safe, effective, efficient risk-based wildfire management decisions.

HOW DO WE ADVOCATE FOR NATURAL RESOURCES IN THE HEAT OF INCIDENT MANAGEMENT?



RESOURCE ADVISORS (READS)

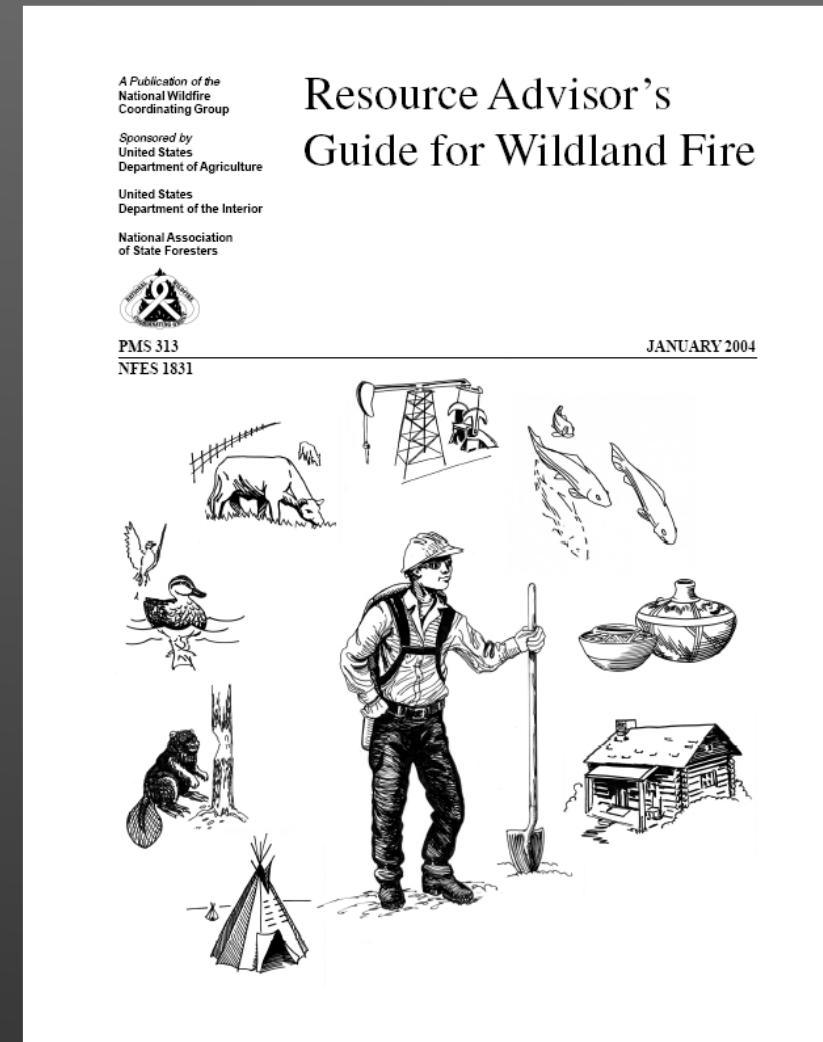


It's a tough job...



THE RESOURCE ADVISOR DEFINED

- ▶ Identifies and evaluates potential impacts and benefits of fire and fire management actions on natural and cultural resources
- ▶ Communicates resource issues to the Incident Commander and/or Incident Management Team
- ▶ Identifies needs for:
 - ▶ Fire Suppression activity damage repair
 - ▶ BAER – Burned Area Emergency Response
 - ▶ Long-term restoration



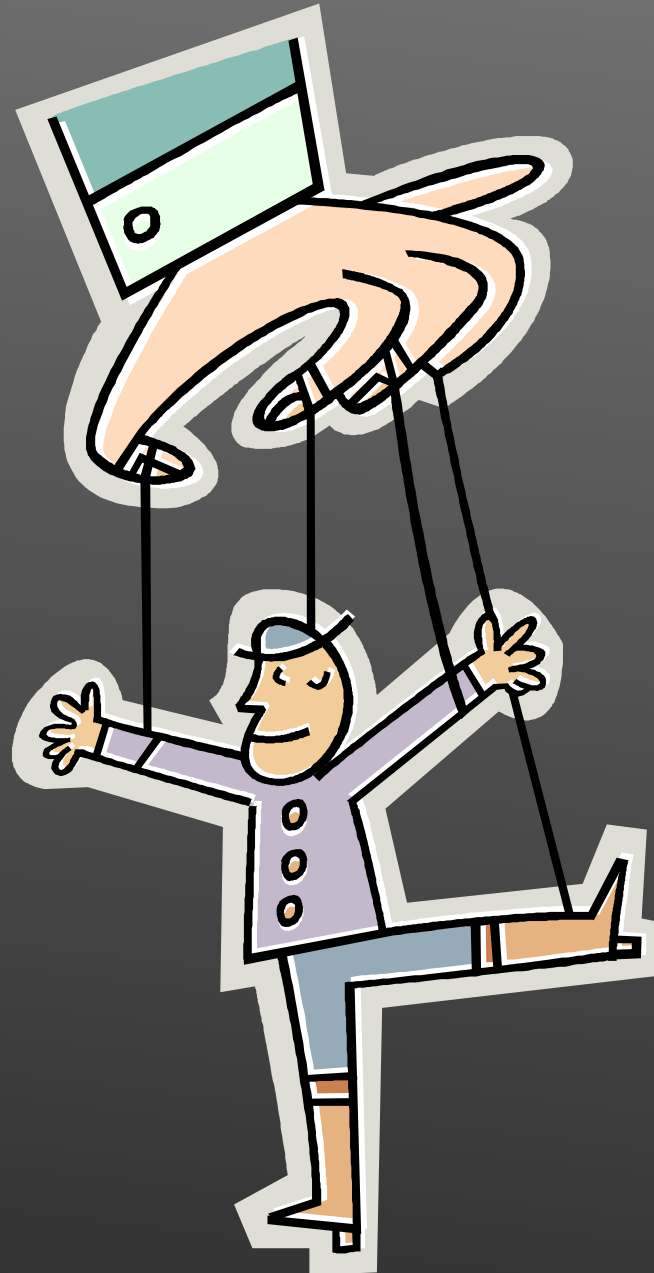


ADVISOR MEANS ADVISOR

- ▶ READs provide input for the purposes of minimizing impacts to natural and cultural resources.
- ▶ READs are not decision makers about on-the-ground strategies and tactics...
- ▶ 2001 Federal wildland fire policy: **“Firefighter and public safety is the first priority in every fire management activity”**



SOCIAL ENGINEERING





STRATEGIES FOR EFFECTIVE ADVISING

- ▶ Be Prepared
- ▶ Be Happy
- ▶ Address conflicts with care
- ▶ Communicate
- ▶ Use the Authority of the Resource

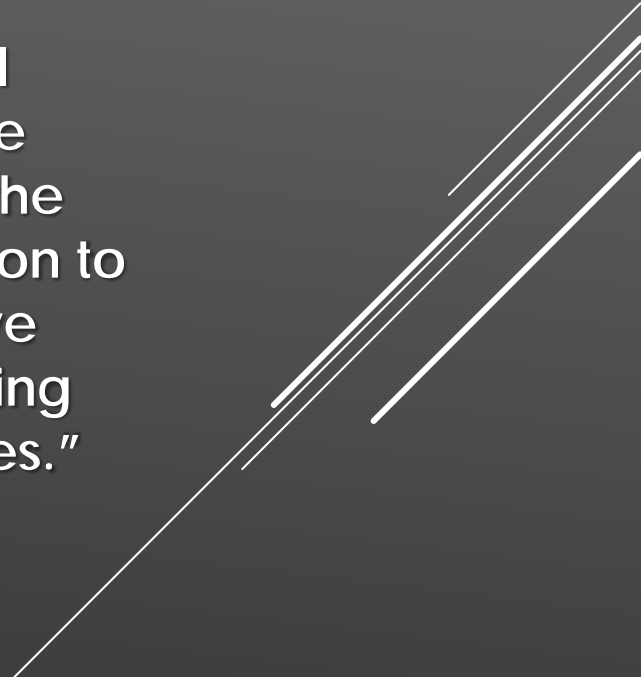




STRATEGY: USE THE *"AUTHORITY OF THE RESOURCE"*

" Because I'm the resource advisor and I have a delegation of authority that empowers me to make these decisions."

"Because taking advantage of the natural opening will eliminate the need to fell 20 trees. It's the minimum necessary action to insure that when we leave here there will be no lasting impacts from our activities."



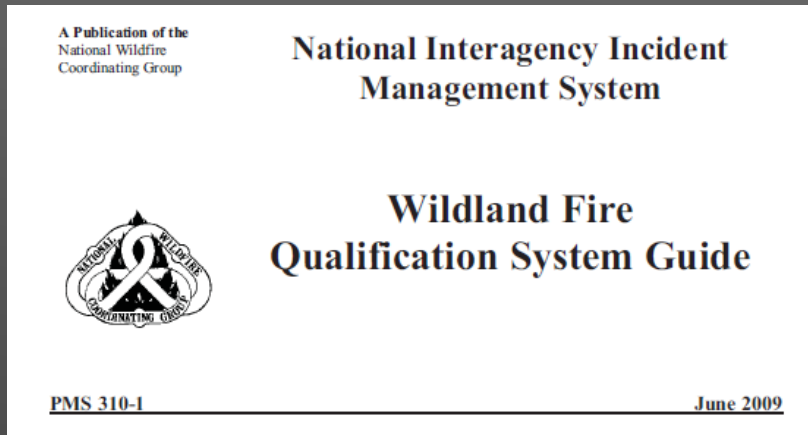
AND REMEMBER...

- ▶ you are an advisor, not a decision-maker
- ▶ at times, you will be uncomfortable
- ▶ you may be shocked
- ▶ you will be frustrated
- ▶ remain assured you are filling one of the single most important roles in the fire organization



QUALIFICATIONS

READs are designated as Technical Specialists (THSPs) by the National Wildfire Coordinating Group (NWCG)



"Technical Specialists are personnel with specialized skills gained through educational degree programs or industry training of established standards. These personnel may perform the same duties during an incident that they perform in their regular job and may have supplemental training in the Incident Command System in order to utilize their specialized skills in the incident environment.

Although position codes have been assigned to technical specialist positions that can be used within the Incident Command System, no minimum qualifications have been established by NWCG."

WHAT IT TAKES TO BE A READ...CONT.

Resource Management Knowledge

Ability to acquire knowledge of local politics and Land Use Plans (e.g., local community, county, tribal, interagency, general management plans, Wilderness Plans, Natural/Cultural Resource Management Plans, and Fire Management Plans).

Ability to acquire knowledge on the affected area including, but not limited to, topographic features and vegetation types, critical areas, types of visitors and inhabitants, improvements, roads, hazards, etc.

Basic knowledge of fire and fire suppression impacts on natural and cultural resources.

Map reading and handheld Global Positioning System (GPS) navigation skills.

Ability to plan for and implement fire rehabilitation treatments.

What it takes to be a READ...cont.

General

Knowledge and experience in guidelines, policies, and implementation for natural and cultural resource management, including mitigation and protection measures. (Minimum Impact Suppression Tactics and Leave No Trace practices.)

Oral and written communication skills.

Qualifying experience is suggested to include a minimum of two satisfactory trainee assignments.

What it takes to be a READ...cont.

TRAINING

Universal ICS Position Requirements

- S-130/190-Firefighter Training & Intro to Wildland Fire Behavior
- L-180-Human Factors on the Fireline
- I-100-Introduction to ICS
- Annual Fireline Safety Refresher Training

Resource Advisor Training

- NWCG Resource Advisor Course Number N-9042
 - READ Webinar Announcement available after the session

(NPS also requires I-200, I-700, I-800)



Response to Wildfire

Encompasses all response actions to manage a wildfire

The full spectrum of tactical and strategic options are available

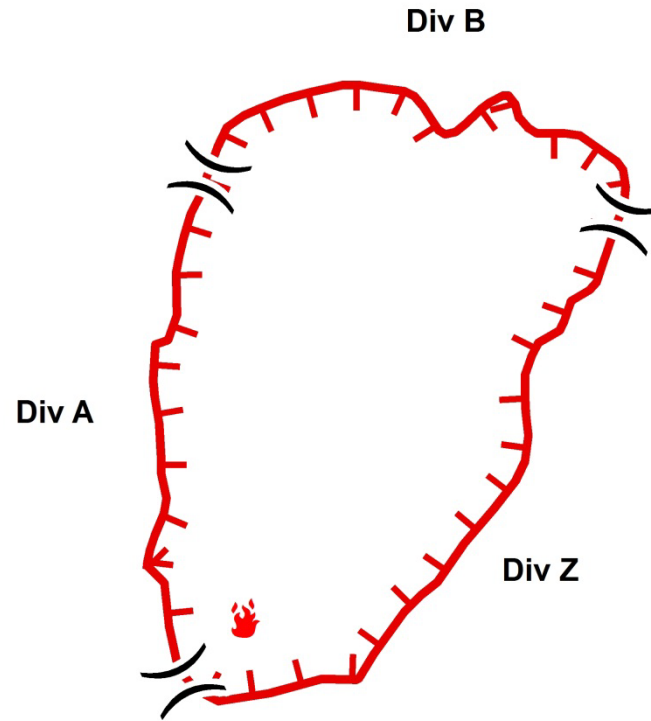




Fire Tactics

Monitoring

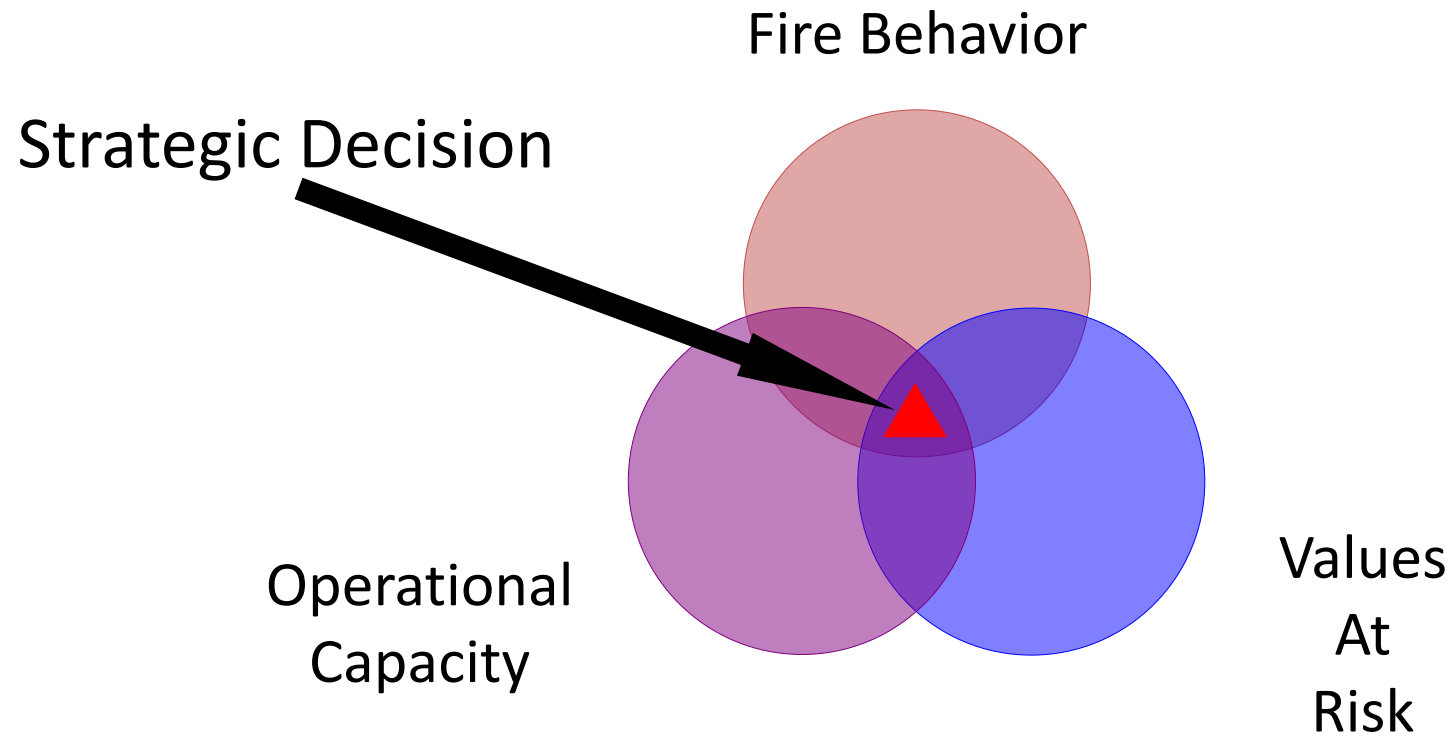
Indirect Line
Construction
With burnout



Direct Line
Construction



Response to Wildfires





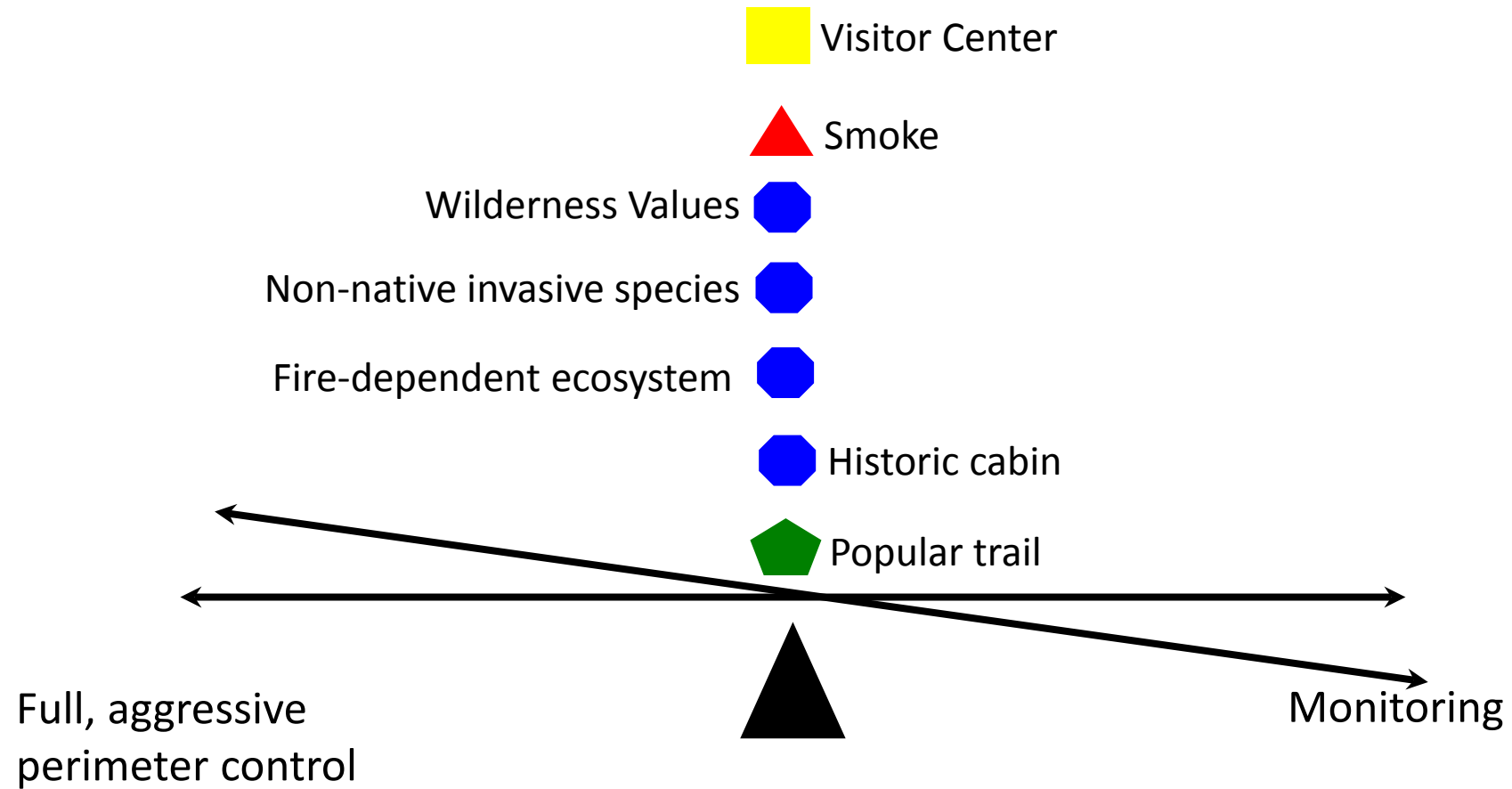
Minimal fire behavior



Wilderness



Autumn





Incident Response

Types of initial response

- ✓ Type 5= Single Resource and Low Complexity Incident
- ✓ Type 4= Multiple Resources, Low to Moderate Complexity
 -
 -
 -
- ✓ Type 1 = Many resources, High Complexity, People and Property at Risk



Owl Fire ICS

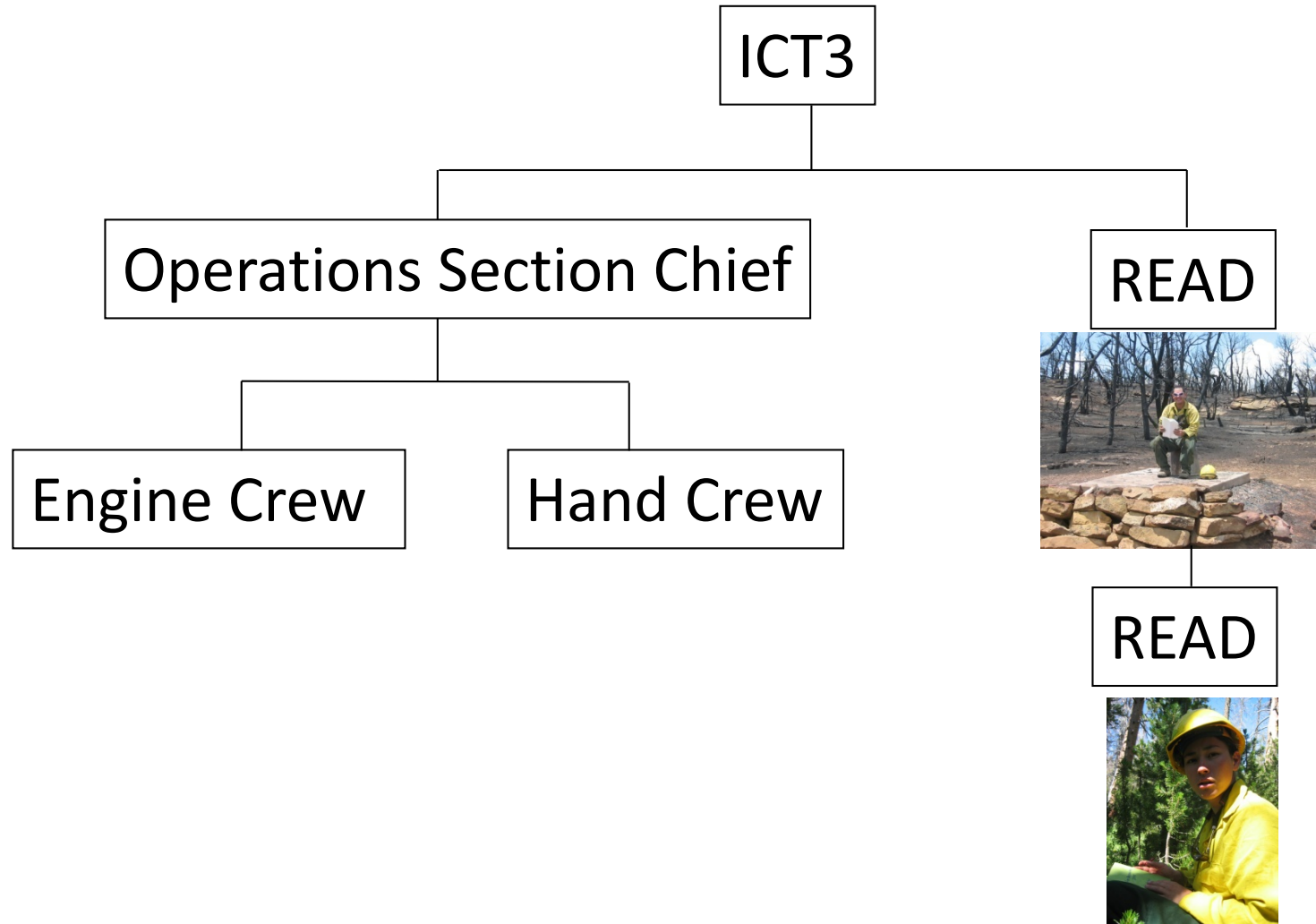
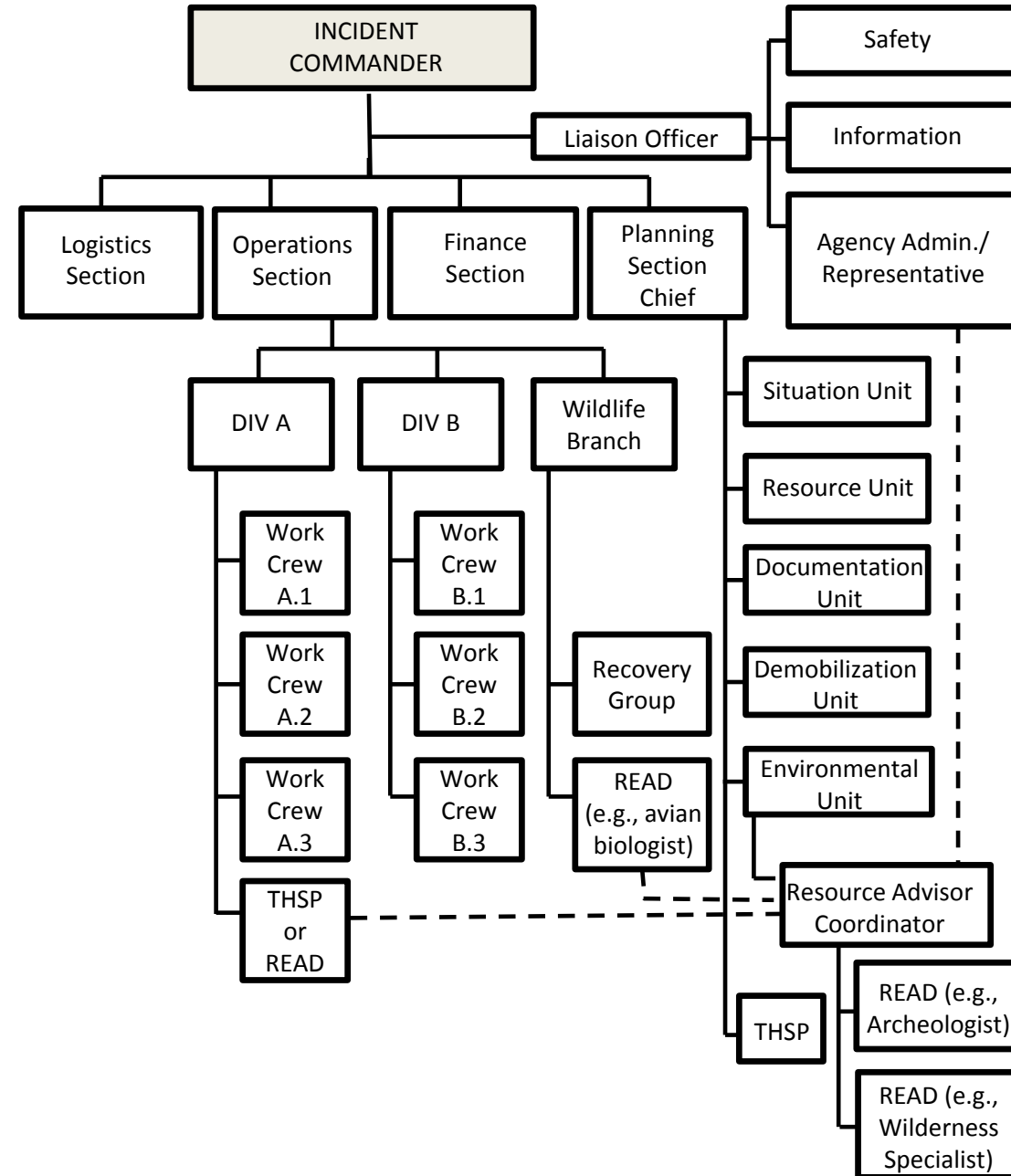


Figure 06



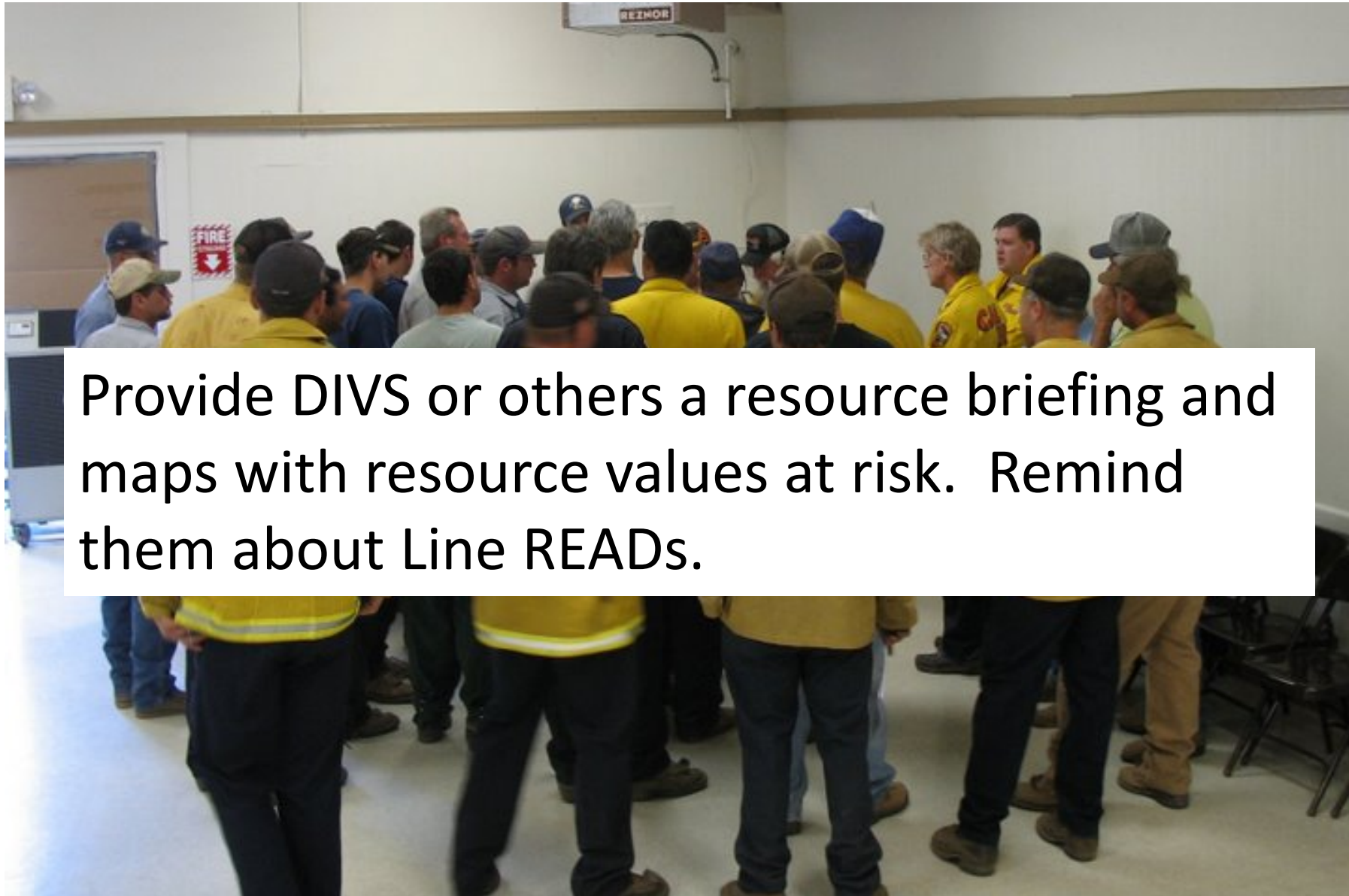
Incident Management Teams



DAY 3, 1600: Planning Meeting



Division Break-Outs



DAY 3: READ Tasks

- Planning Meeting at 1800
- Talk to Incident Commander at 1900
- Incident Action Plan additions due at 2000
- Prepare bear posters
- Call Superintendent
- Have Marti and Kent prepare READ “Care Packages” for READs on the line
- Operations briefing checklist
- Unit log
- Time

Transition to Burned Area Emergency Response or BAER Teams



BAER Team
Rattle Complex

BAER/BAR Team
Flick Creek Fire





Who's the Resource Advisor?

