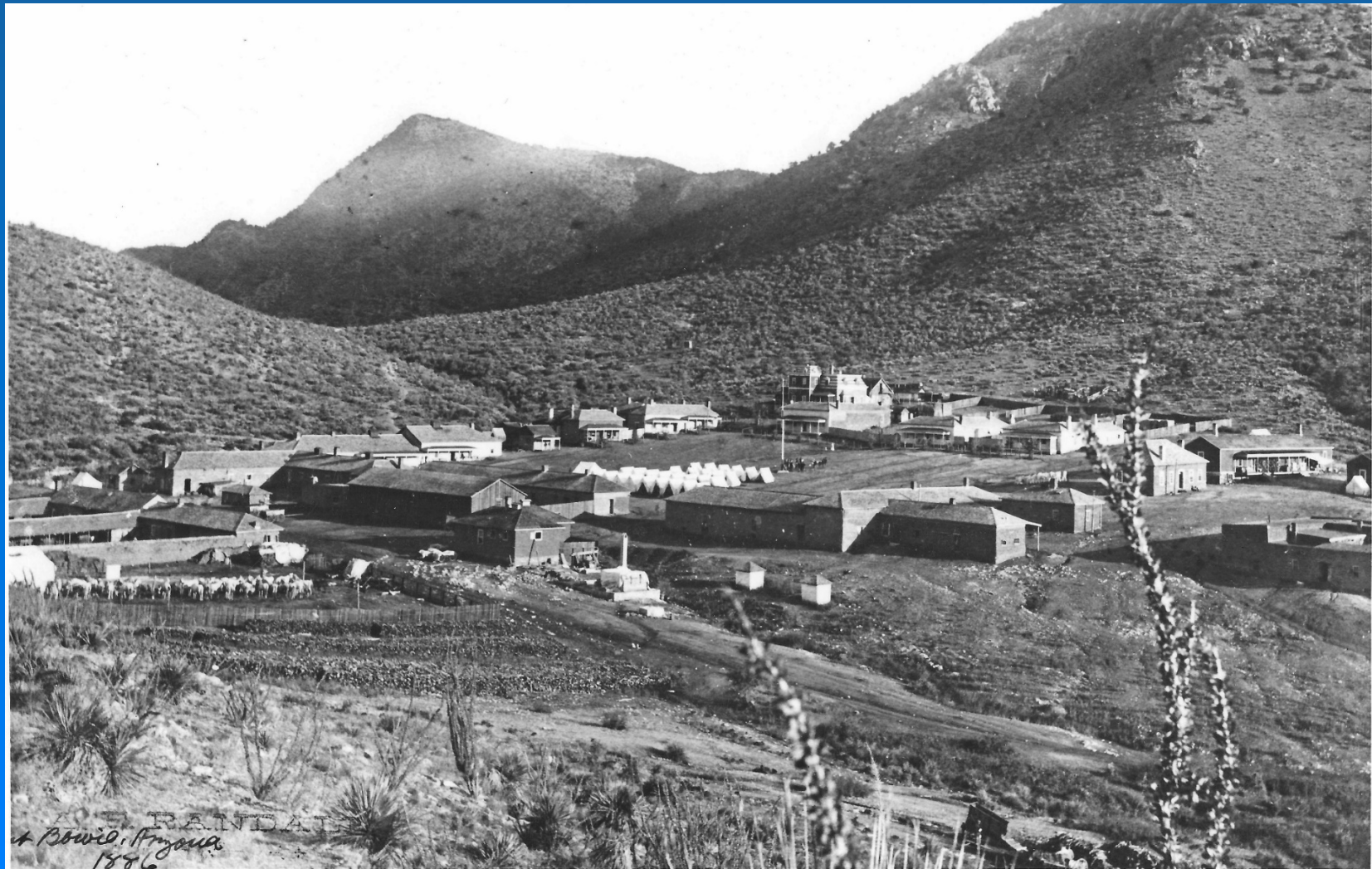


Letting the Landscape Speak:  
Values and Challenges of "Historic Abandonment"  
Design and Management at Fort Bowie NHS  
Robin L Pinto





# Apache Pass



# Chiricahua Apache Homeland



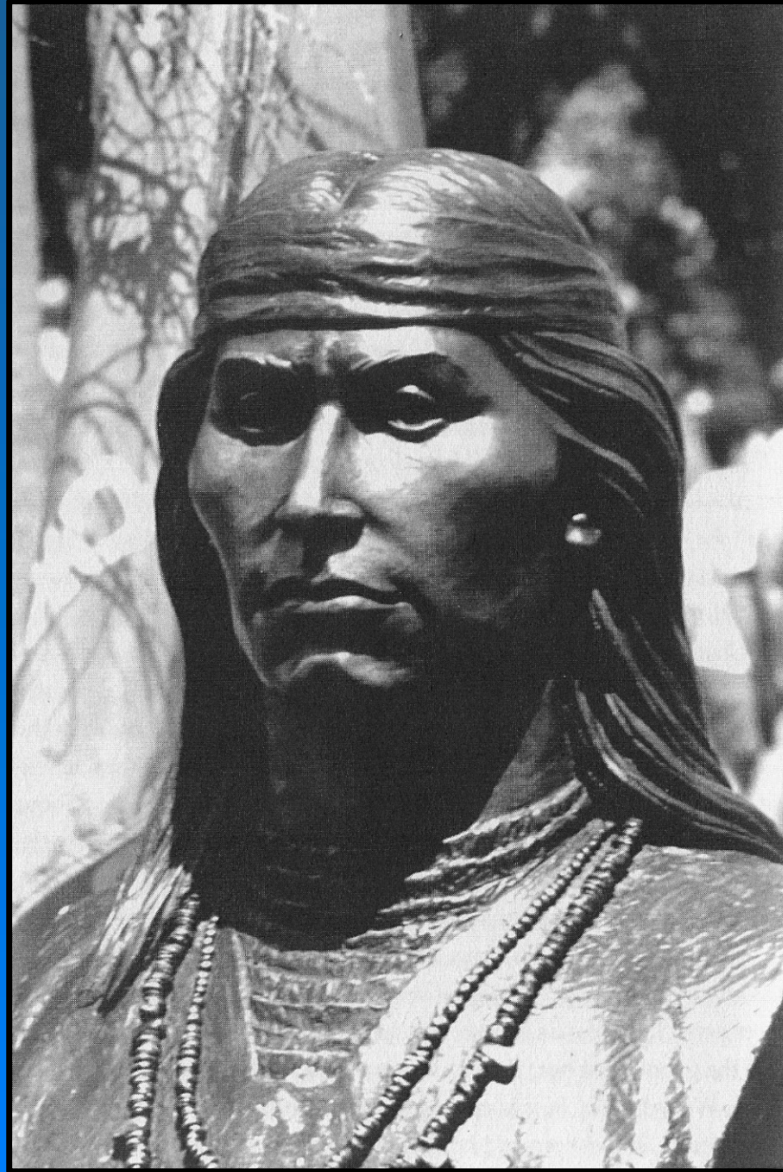


# Apache Spring





# Cochise





# Stage Station Foundation Ruins





# California Volunteers' Approach to Stage Station





# Stone Breastworks from which Apaches Attacked Army





# Fort Bowie Cemetery in 1886



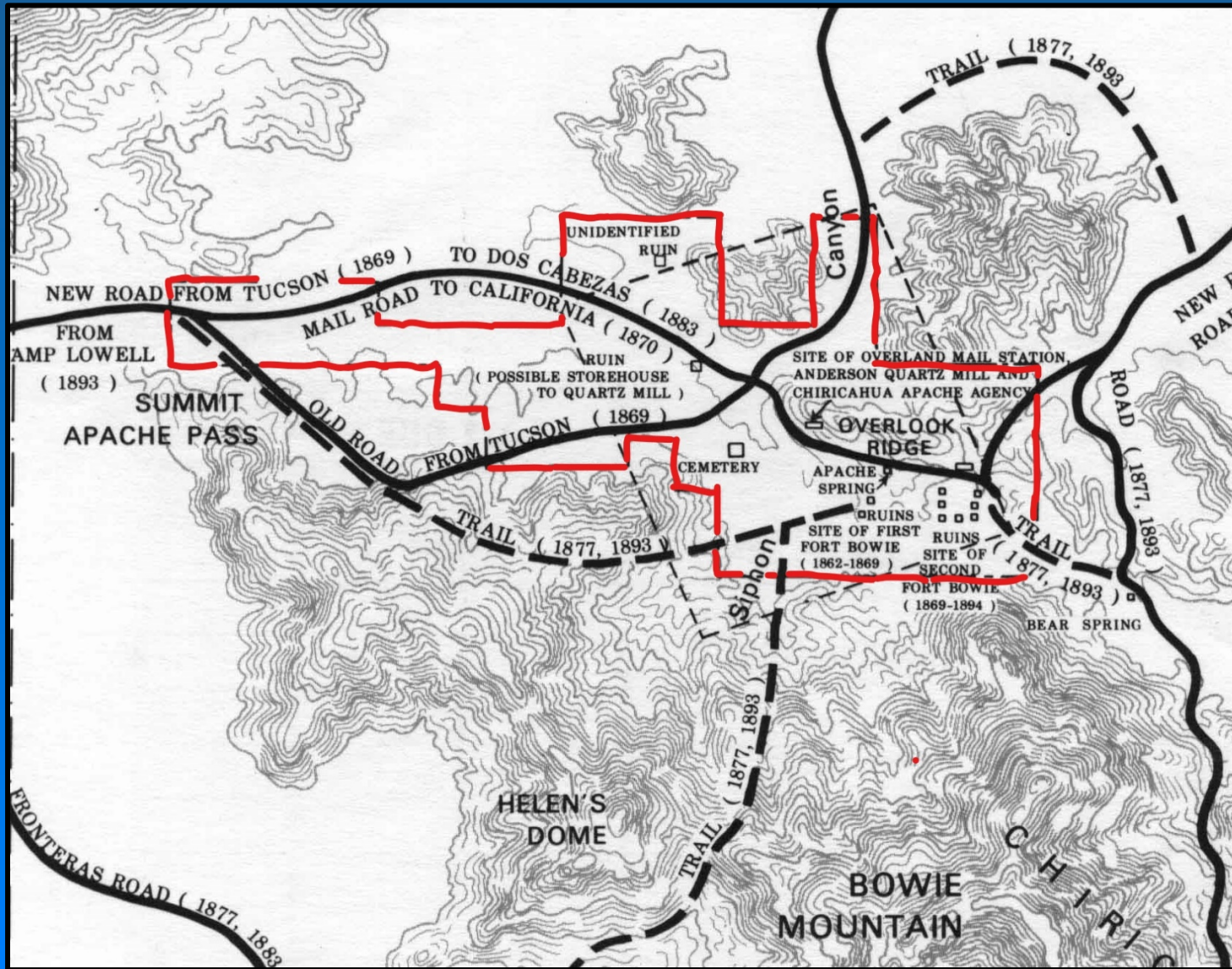


# Officers' Row Ruins 1967





# Fort Bowie National Historic Site



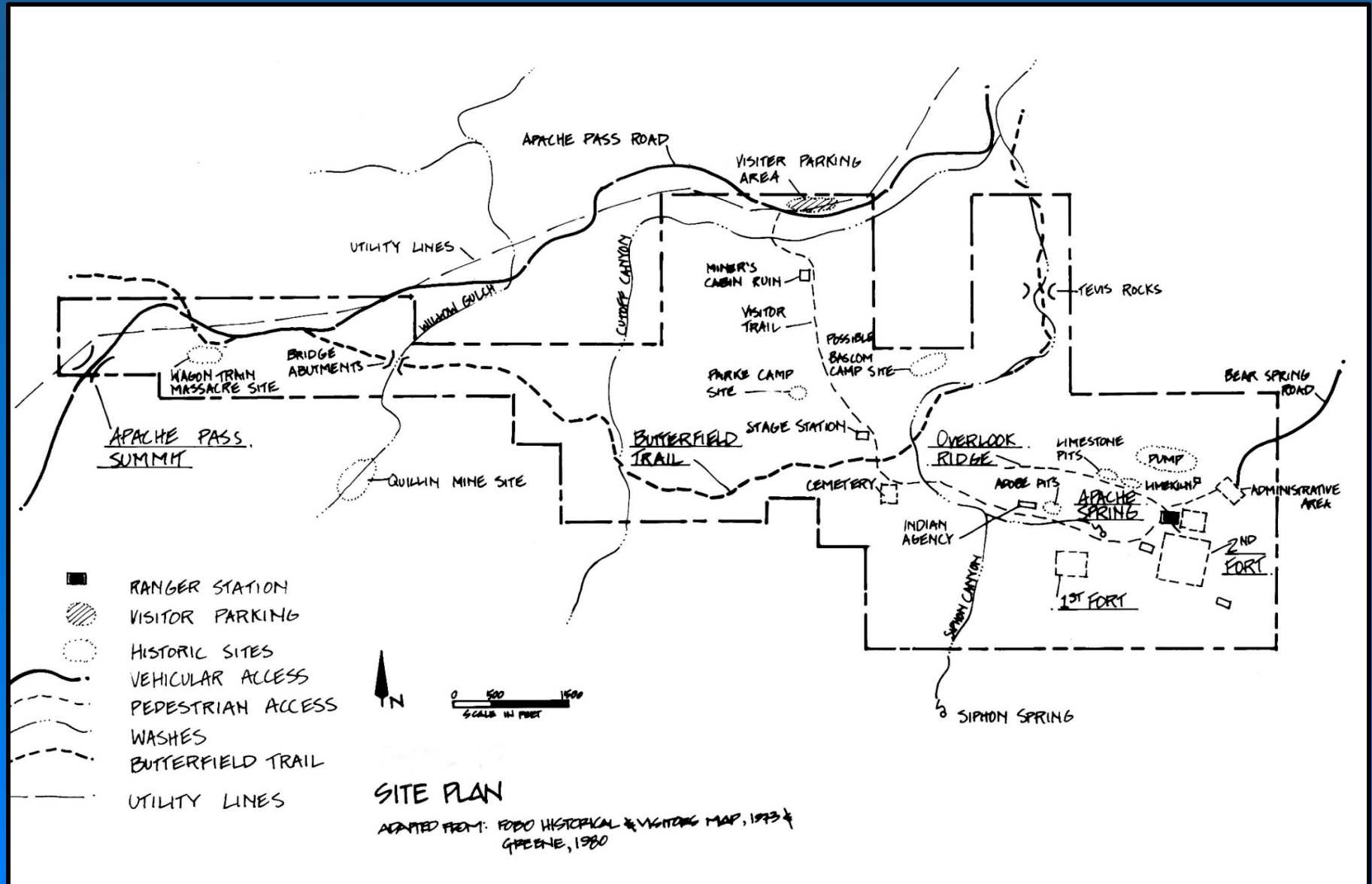


# Bill Brown, 3<sup>rd</sup> from Left Front Row



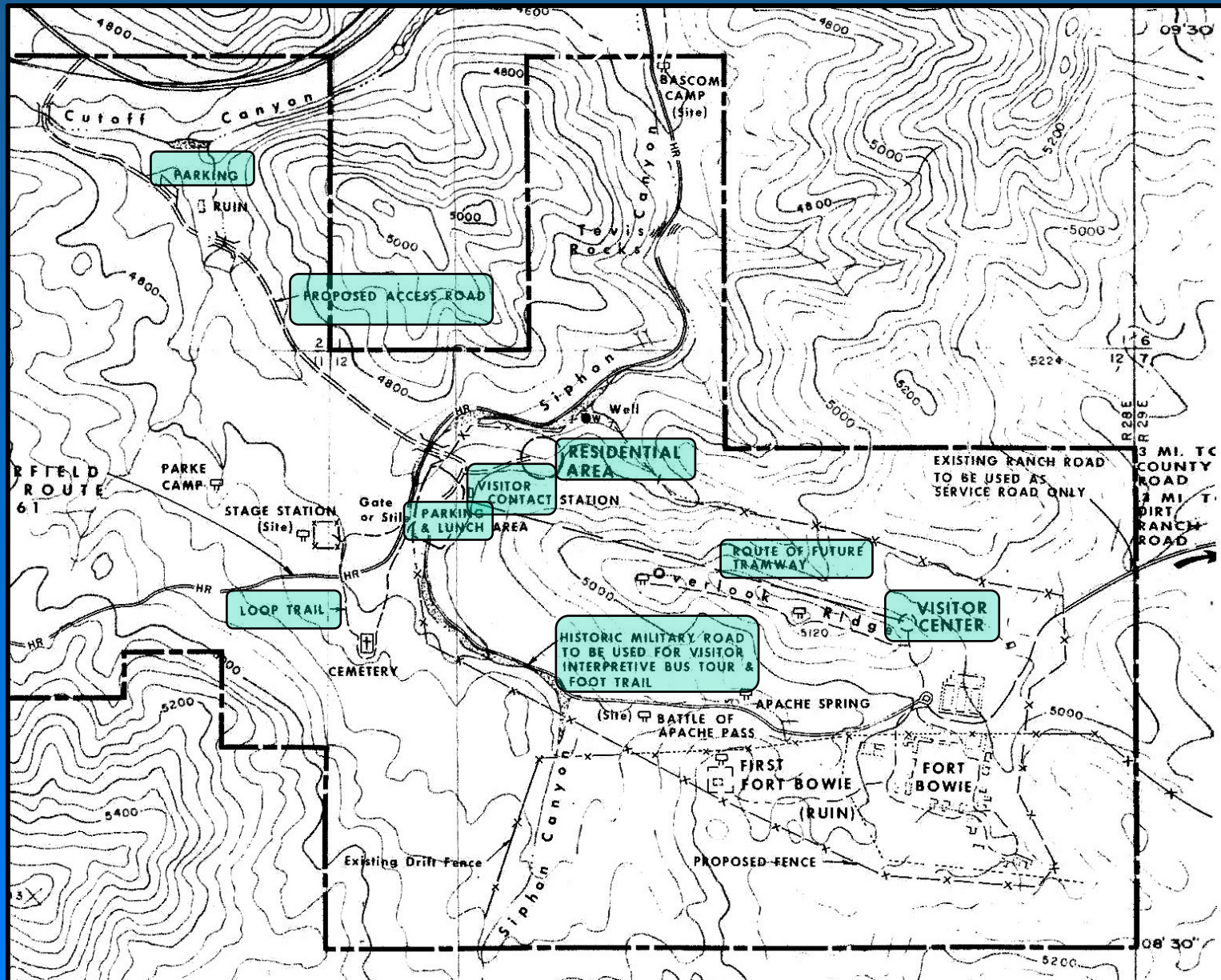


# Map of Fort Bowie's Natural and Historic Features





# Mission 66 Plan for General Development





# First Contact Station Built in 1971





# Fort Bowie's Modern Visitor Center







Adobe Ruins  
Showing Impacts  
from Trampling  
by Cattle





Triangle Valley  
1893



Triangle Valley  
1997





Collapse of  
Historic Adobe  
and Plaster  
following Rain  
Storm



# Lime Plaster Encapsulation





